



Paddle # 15

Upper Wadboo Creek

www.BerkeleyBlueways.com

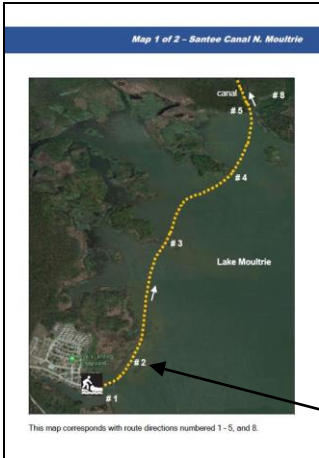
Distance: 5 miles, one way

Time: 2-3 hours

Difficulty: Moderate to Strenuous



Convenient Functionality Built into This Guide





On Map Pages:

Using your phone (or touch-screen enabled device), tap any of the route numbers to bring up a map of the exact location!



Route - Santee Canal N. Moultrie

Route Directions	
1	From the boat ramp at Angel's Landing Marina, turn left, heading in a northeast direction. LOOK →  <small>Click on individual route directions to bring up map of exact location!</small>
2	At 0.1 mile, pass by island of tall grass. It's best to pass on the left side, closest to the mainland. Continue in slight northeast direction.
3	Pass by tip of island at 0.6 miles. Begin  even more northeastern direction towards another large island 0.3 mile away.
4	At 0.9 mile, paddle around southern tip of island, head into center of bay, paddling towards upper right corner of bay. This is where the canal opening is located.
5	Enter Santee Canal at 1.4 miles. This is a narrow, shallow waterway (no more than 20 yards wide and maintains a depth of 4-5 feet). Enjoy the calm waters of the Santee Canal. Keep an eye out for wildlife, including alligators, deer, wild boar and a variety of waterfowl!
6	Come to railroad crossing over the canal at 2.8 miles. The canal will begin to narrow shortly after the railroad crossing.
7	At 3.2 miles, come to the obvious end of the canal. Return the same way you came.
8	Option: Turn a hard left when leaving the canal and head into a field of lilies. This is picturesque and worth the extra 20-30 minutes, particularly when everything is in bloom!

On Route Direction Pages:

Tap anywhere in the individual direction boxes to bring up a map of the exact location!



Upper Wadboo Creek

15

Date Paddled: _____



Fall paddle on Upper Wadboo Creek near the Rembert C. Dennis Landing.

Summary

One of the most beautiful paddles in the state, the historic Upper Wadboo Creek is a lovely cypress swamp that looks the same as it did two centuries ago when Francis Marion roamed these parts. You'll see remnants of 19th century rice plantation dikes and canals, limestone bluffs and the fauna include white tailed deer, turkey, osprey and ibis.

Difficulty

Moderate to Strenuous. Can be challenging during periods of low water when it may be necessary to portage around obstructions.

Distance

5 miles, one way.

Time

2 - 3 hours

Crowds

Light

Boat Type Shorter boats of 10-feet or under can have a big advantage in the Upper Wadboo Creek. Paddle boards are not recommended.

Requires staging 2 vehicles or arranging pickup!

Put In Patts Road, Moncks Corner, SC 29461. Park at end of dirt road and there's an easily to find path leading to Palmetto Trail on the southeast side of the parking area. The launching ramp/bridge is a 300-yard portage down the trail.

GPS for Parking Area:

33.255451, -79.916218
33°15'19.6"N, 79°54'58.4"W

GPS for Actual Ramp/Bridge:

33.253937, -79.913003
33°15'14.2"N, 79°54'46.8"W

Take Out Rembert C. Dennis Landing, 1400 SC HWY 402, Moncks Corner, SC 29461.

GPS: 33.195955, -79.953198
33°11'45.4"N, 79°57'11.5"W

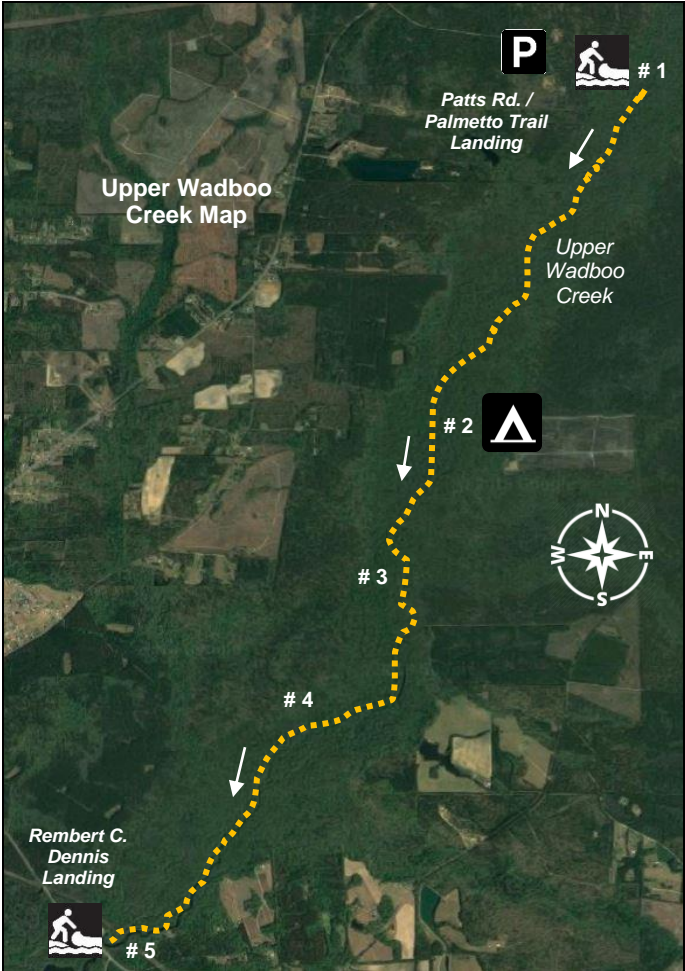
Fees/Permits None

Current Negligible, runs southwest

Tidal Influence Yes, but not as strong as the Lower Wadboo Creek. Approximately 2.75 hours behind Charleston Harbor tide table.

Precautions: Obstructions or water levels that require portaging are the biggest concern. After big storms, downed trees and low hanging branches will have to be negotiated. It's advisable to wear bright orange during hunting season.

Map – Upper Wadboo Creek



This map corresponds with route directions numbered 1 - 5 on page 6.

Route Directions – see map on page 5

1	<p><u>Note</u>: this can be paddled from either boat ramp. For the purposes of this guide, the route directions are from the Upper Wadboo Creek off the Palmetto Trail.</p> <p>From the wooden ramp, turn right, heading south on Wadboo Creek. Over the next mile is some of the densest of the creek. Look for small yellow diamond-shaped trail markers bearing the likeness of a canoe.</p>
2	<p>At approximately 2.3 miles, there's a small camping area on the left. Depending on water levels and recent rains, there's enough room for several tents here. This is a great spot for a break or lunch.</p>
3	<p>Several limestone bluffs at 2.9 miles.</p>
4	<p>By 4.2 miles, the creek begins to widen to 20 - 30 feet and continues to widen to 50 - 70 feet over the next half mile. There's a possibility that you could begin to see small motorized boats from here to the take-out point.</p>
5	<p>At 5.2 miles, arrive at the Rembert C. Dennis Landing on your right.</p>



The residents of Wadboo Creek are very photogenic!



The narrow waters of the Upper Wadboo Creek.