



Paddle # 11

Santee River 3

Arrowhead to Jamestown

[**www.BerkeleyBlueways.com**](http://www.BerkeleyBlueways.com)

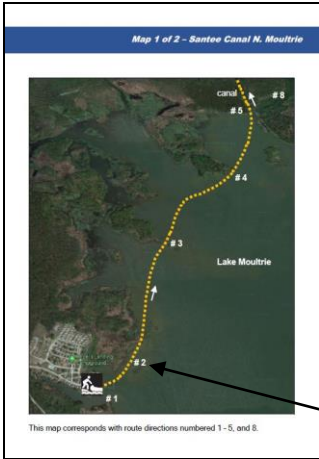
Distance: 16 miles

Time: 6-8 hours

Difficulty: Very Strenuous



Convenient Functionality Built into This Guide




On Map Pages:

Using your phone (or touch-screen enabled device), tap any of the route numbers to bring up a map of the exact location!



Route - Santee Canal N. Moultrie

Route Directions	
1	From the boat ramp at Angel's Landing Marina, turn left, heading in a northeast direction. LOOK →  Click on individual route directions to bring up map of exact location!
2	At 0.1 mile, pass by island of tall grass. It's best to pass on the left side, closest to the mainland. Continue in slight northeast direction.
3	Pass by tip of island at 0.6 miles. Begin to even more northeastern direction towards another large island 0.3 mile away.
4	At 0.9 mile, paddle around southern tip of island, head into center of bay, paddling towards upper right corner of bay. This is where the canal opening is located.
5	Enter Santee Canal at 1.4 miles. This is a narrow, shallow waterway (no more than 20 yards wide and maintains a depth of 4-5 feet). Enjoy the calm waters of the Santee Canal. Keep an eye out for wildlife, including alligators, deer, wild boar and a variety of waterfowl!
6	Come to railroad crossing over the canal at 2.8 miles. The canal will begin to narrow shortly after the railroad crossing.
7	At 3.2 miles, come to the obvious end of the canal. Return the same way you came.
8	Option: Turn a hard left when leaving the canal and head into a field of lilies. This is picturesque and worth the extra 20-30 minutes, particularly when everything is in bloom!

On Route Direction Pages:

Tap anywhere in the individual direction boxes to bring up a map of the exact location!



Santee River – Arrowhead Landing

11

Date Paddled: _____



Late spring overnight camping trip down the Santee River. It's a blast!

Summary

This paddle begins at Arrowhead Landing in St. Stephen on the Rediversion Canal and ends at the Jamestown Landing adjacent to the HWY 41 bridge. Throughout the trip, there are numerous sandbars and small islands for lunch or rest spots. Wildlife consist of numerous large birds, deer and wild boar.

Difficulty

Very strenuous due to distance

Distance

16 miles

Time

6 - 8 hours

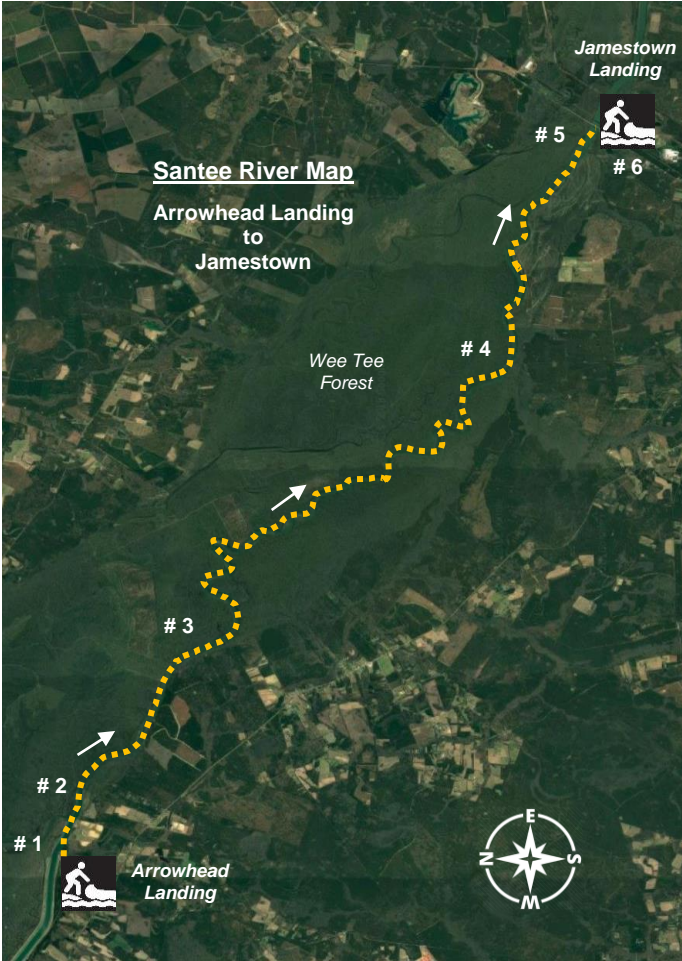
A long, quiet paddle down a picturesque river section

Crowds	Very light. You're likely to only see motorized boats near the two landings. Not many paddlers make this journey either.
Boat Type	Kayaks or canoes 14-feet or longer. Paddle boards are not recommended.

Requires staging 2 vehicles or arranging pickup!

Put In	Arrowhead Landing, Arrowhead Road, St. Stephen, SC 29479. GPS: 33.404235, -79.863481 33°24'15.3"N, 79°51'48.5"W
Take Out	Jamestown Landing, US-17/41 ALT, Jamestown, SC 29453. GPS: 33.303510, -79.679659 33°18'12.6"N, 79°40'46.8"W
Fees/Permits	None
Current	Flows downriver in a southeast direction.
Tidal Influence	Yes, can begin to feel tidal influence within 2-3 miles of Jamestown Landing. Tide is approximately 3 - 3.5 hours behind Charleston Harbor tide table.
Precautions:	Motorized boats go up and down the river near the two landings. While normally not a problem for paddlers, dam water releases could inundate sandbars. Call 800-925-2537 for scheduled releases.

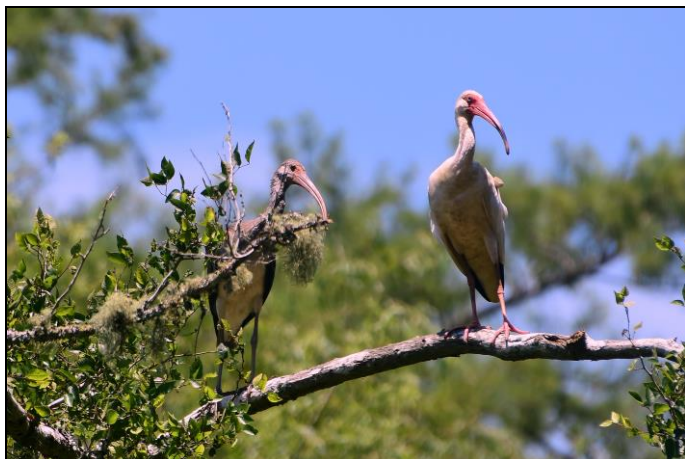
Map – Santee River Arrowhead Landing



This map corresponds with route directions numbered 1 - 6 on page 6.

Route Directions - see map on page 5	
1	From the boat ramp, turn right to begin paddling down river. For most of the river, you can expect a 1 - 3 MPH current, depending on width and water levels.
2	Within 1 mile, the river leaves evidence of human habitation and becomes quite primitive. The river is now about 250-ft. wide and remains about this width for the next 13 miles. There's an island at 1.5 miles.
3	At 4.3 miles, the river begins "zig-zagging" back and forth (following the way of a "snake") for the next 7 miles. It offers little in the way of variety, but is a quiet, beautiful paddle with numerous small islands and sandbars. Keep your eyes open for herons and ibis.
4	A little past 11 miles, the river begins to widen, has sweeping bends, and then widens even more.
5	At 15.3 miles, within sight of the Jamestown Landing bridge, is a beautiful Santee River tributary creek on the left. It traverses back into a bottomland cypress habitat that's part of the Wee Tee Forest. It's worth exploring if you're not too tired from your 16-mile paddle. (Some mapping/GPS applications call this creek "Wittee Branch.")
6	At 16.1 miles, complete your paddle at the Jamestown Landing / US 17/41 bridge on the right side of the river.

Photos -- Santee River Arrowhead Landing



Ibis along the Santee River.



Jamestown Landing within sight, on the Santee River.