



Paddle # 5

Dennis's Pasture

East Lake Moultrie

www.BerkeleyBlueways.com

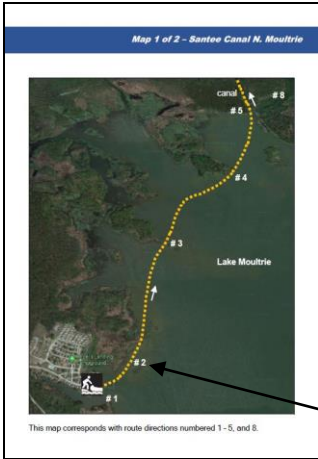
Distance: 4-6 miles, round-trip

Time: 2-3 hours

Difficulty: Easy to Moderate



Convenient Functionality Built into This Guide



On Map Pages:

Using your phone (or touch-screen enabled device), tap any of the route numbers to bring up a map of the exact location!



Route - Santee Canal N. Moultrie

Route Directions	
1	From the boat ramp at Angel's Landing Marina, turn left, heading in a northeast direction. LOOK →  <i>Click on individual route directions to bring up map of exact location!</i>
2	At 0.1 mile, pass by island of tall grass. It's best to pass on the left side, closest to the mainland. Continue in slight northeast direction.
3	Pass by tip of island at 0.6 miles. Begin  even more northeastern direction towards another large island 0.3 mile away.
4	At 0.9 mile, paddle around southern tip of island, head into center of bay, paddling towards upper right corner of bay. This is where the canal opening is located.
5	Enter Santee Canal at 1.4 miles. This is a narrow, shallow waterway (no more than 20 yards wide and maintains a depth of 4-5 feet). Enjoy the calm waters of the Santee Canal. Keep an eye out for wildlife, including alligators, deer, wild boar and a variety of waterfowl!
6	Come to railroad crossing over the canal at 2.8 miles. The canal will begin to narrow shortly after the railroad crossing.
7	At 3.2 miles, come to the obvious end of the canal. Return the same way you came.
8	Option: Turn a hard left when leaving the canal and head into a field of lilies. This is picturesque and worth the extra 20-30 minutes, particularly when everything is in bloom!

On Route Direction Pages:

Tap anywhere in the individual direction boxes to bring up a map of the exact location!



Dennis's Pasture – E. Lake Moultrie

5

Date Paddled: _____



Barred Owl in Dennis's Pasture near the dike system on Lake Moultrie.

Summary

Dennis's Pasture, also known as the "Cow Pasture," comprises of the area between The Jungle and Bonneau Beach. It consists of numerous small islands and open bays of varying depths and vegetation. It's unique because the density of islands and cypress groves offer good wind protection. You can easily spend a full day of paddling the various bays, way ditch and canal.

Difficulty

Easy to Moderate

Distance

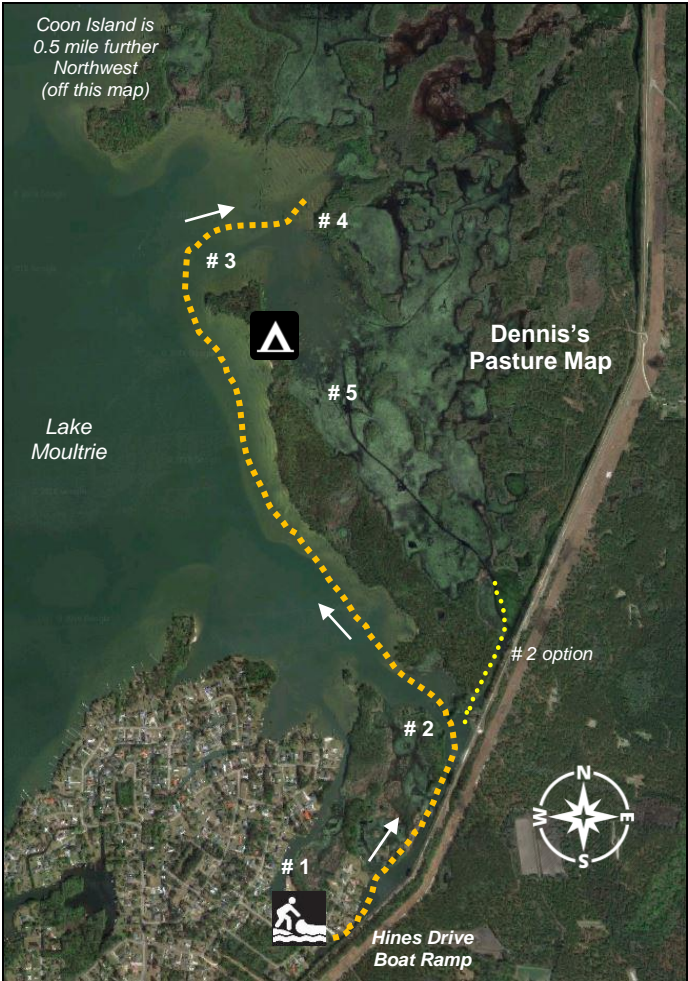
4 - 6 miles, roundtrip, varies based on exploration.

Time

2 - 3 hours, but take your time to discover all this has to offer

Crowds	Moderate. The area can be popular with anglers.
Boat Type	Kayaks or canoes 10 feet or longer. Paddle boards are not recommended.
Put In / Take Out	Hines Drive Bonneau Beach Landing, At corner of Hines Lane & Driftwood Drive, Bonneau, SC 29431 GPS: 33.332530, -79.982775 33°19'57.1"N, 79°58'58.0"W <u>Directions:</u> All GPS and mapping applications recognize this address.
Fees/Permits	None
Current	Negligible, generally southwest direction
Tidal Influence	None
Precautions:	You'll have protection from some winds with a few islands and dikes, however, there are plenty of open spaces in Dennis's Pasture where winds can intensify resulting in waves/whitecaps.

Map – Dennis's Pasture



This map corresponds with route directions numbered 1 - 5 on page 6.

Route Directions – see map on page 5	
1	From the boat ramp, turn left, heading in a northern direction up the canal. This is an area of frequent boat traffic.
2	At 0.5 mile, bear left in northwest direction towards a more open area of Lake Moultrie. Continue paddling close to the shore/treeline for next 1.3 miles. Option: Instead of bearing left, continue straight into the narrow canal into the “backside” of Dennis’s Pasture.
3	At 1.8 miles, round the tip of the peninsula, and turn right heading east.
4	Cross the 1,000-ft. wide open area and you’ve entered Dennis’s Pasture. From this point, there are hundreds of acres of fun exploration!
5	0.4-mile southeast is a wide path that heads 0.7 mile back to the canal. The path itself is worth paddling through, and this can serve as a shortcut back towards the boat ramp. See map. Return the same way you came.



You'll paddle by acres of lily fields in the warmer months.



Good times, big smiles and laughter at Dennis's Pasture.